

ETC® Service Note

Congo™ jr LCD Replacement



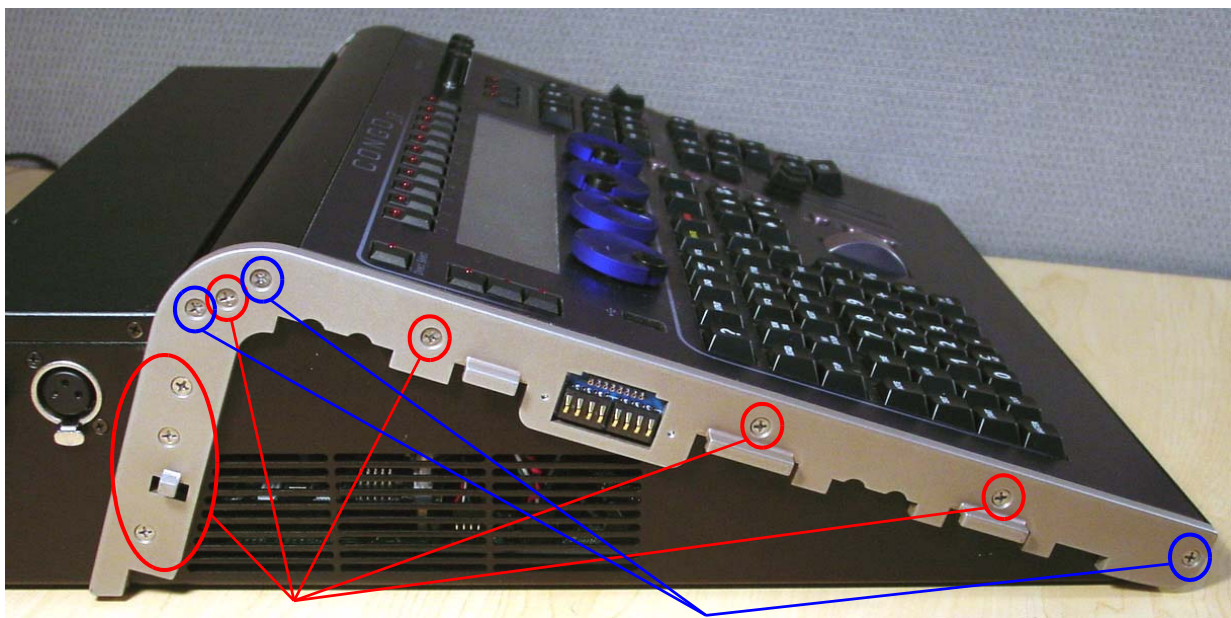
Tools Required:

- #1 Phillips Screwdriver
- #2 Phillips Screwdriver
- Side Cutter
- 4" replacement zip ties

Procedure:

- Step 1: Remove the protective side panels from the Congo jr Console.
- Step 2: Remove the 7 screws indicated in **Red** below.
- Step 3: Loosen the 3 screws indicated in **Blue** below.

NOTE: DO NOT remove the 3 screws.



Remove these screws

Loosen these screws
2 full turns



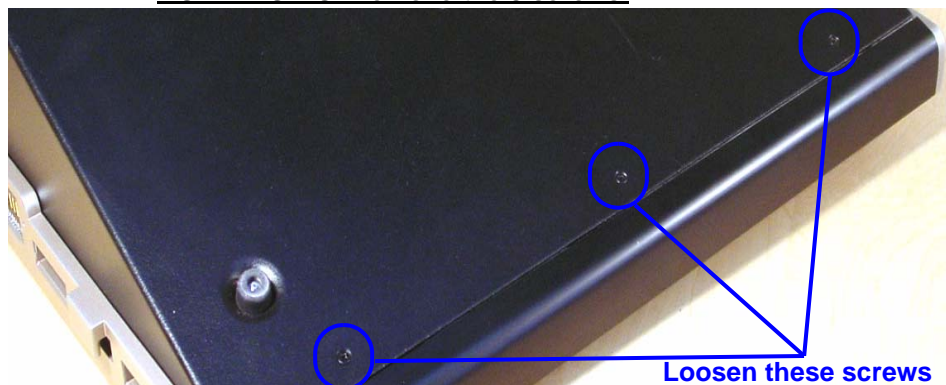
Corporate Headquarters ■ 3031 Pleasant View Road, P.O. Box 620979, Middleton, Wisconsin 53562-0979 USA ■ Tel +608 831 4116 ■ Fax +608 836 1736
London, UK ■ Unit 26-28, Victoria Industrial Estate, Victoria Road, London W3 6UU, UK ■ Tel +44 (0)20 8896 1000 ■ Fax +44 (0)20 8896 2000
Rome, IT ■ Via Ennio Quirino Visconti, 11, 00193 Rome, Italy ■ Tel +39 (06) 32 111 683 ■ Fax +39 (06) 32 656 990
Holzkirchen, DE ■ Ohmstrasse 3, 83607 Holzkirchen, Germany ■ Tel +49 (80 24) 47 00-0 ■ Fax +49 (80 24) 47 00-3 00
Hong Kong ■ Room 1801, 18/F, Tower 1 Phase 1, Enterprise Square, 9 Sheung Yuet Road, Kowloon Bay, Kowloon, Hong Kong ■ Tel +852 2799 1220 ■ Fax +852 2799 9325
Service: (Americas) service@etcconnect.com ■ (UK) service@etc europe.com ■ (DE) techserv-hoki@etcconnect.com ■ (Asia) service@etcasia.com
Web: www.etcconnect.com ■ Copyright © 2006 ETC. All Rights Reserved. ■ Product information and specifications subject to change.
Ⓢ Pending ■ Rev A ■ Released 02/2007

ETC Service Note

Congo™ jr LCD Replacement

Step 4: Carefully flip over the console and loosen the 3 screws in blue below:

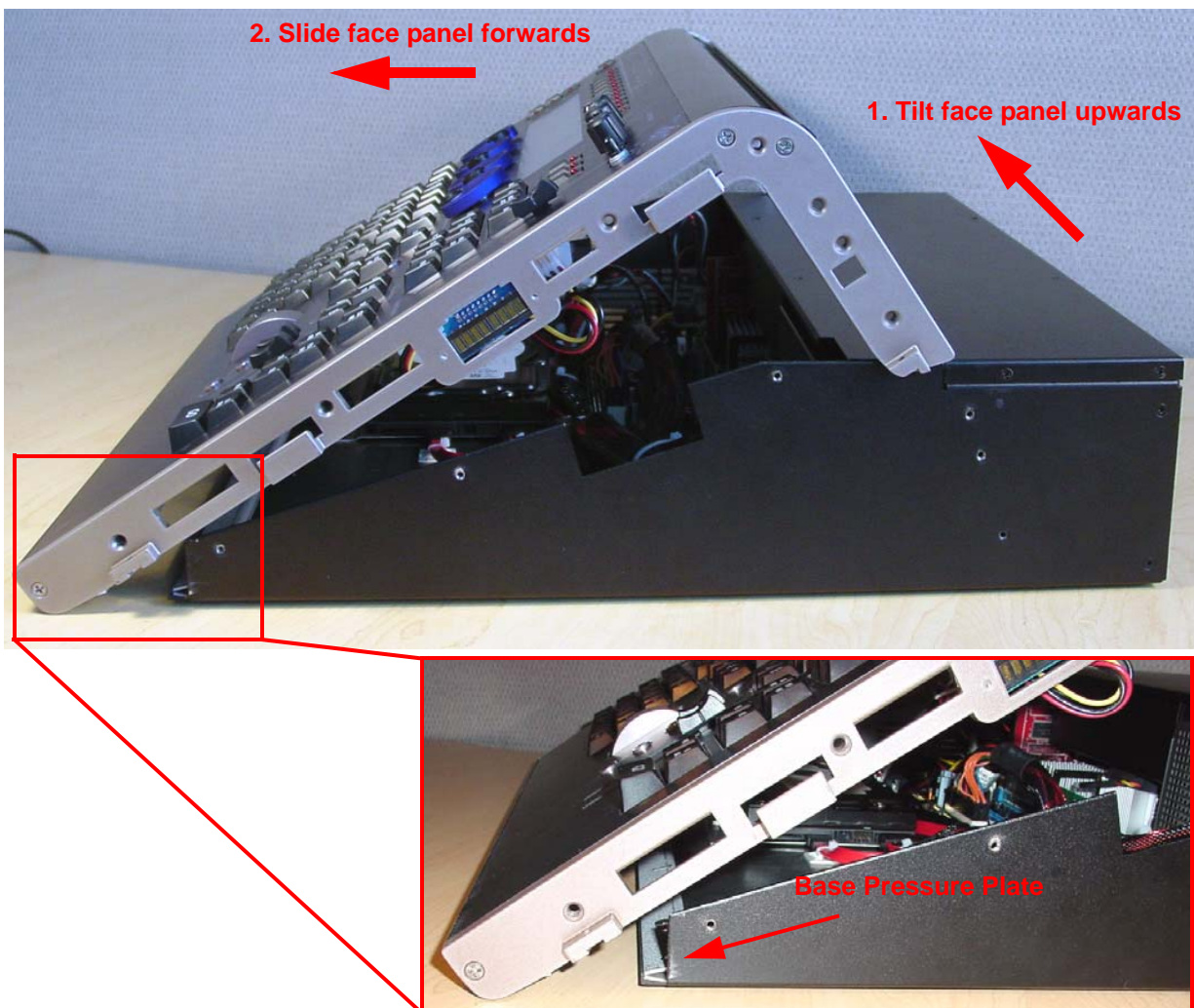
NOTE: DO NOT remove the 3 screws.



Step 5: Flip the console back onto the base.

Step 6: Lift the back side of the face panel upwards away from the base.

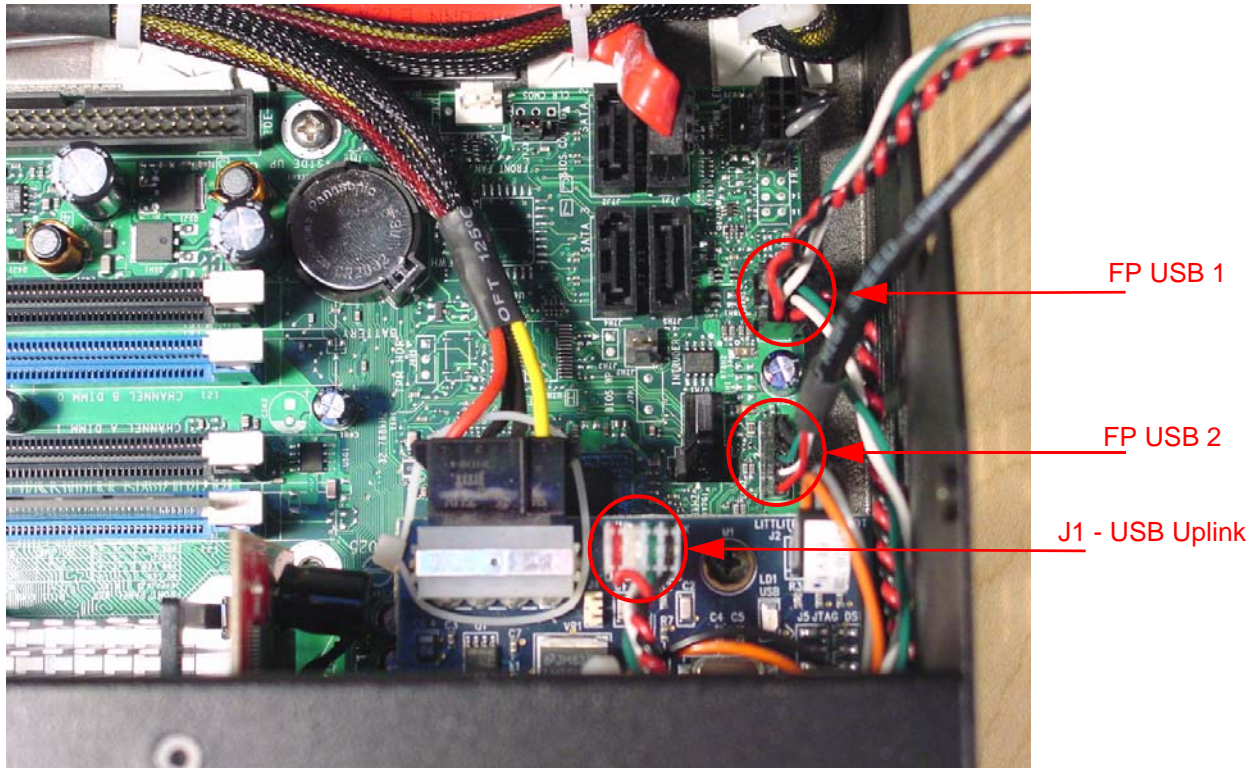
Step 7: Slide the face panel towards the front of the console. The face panel will slip under the base pressure plate.



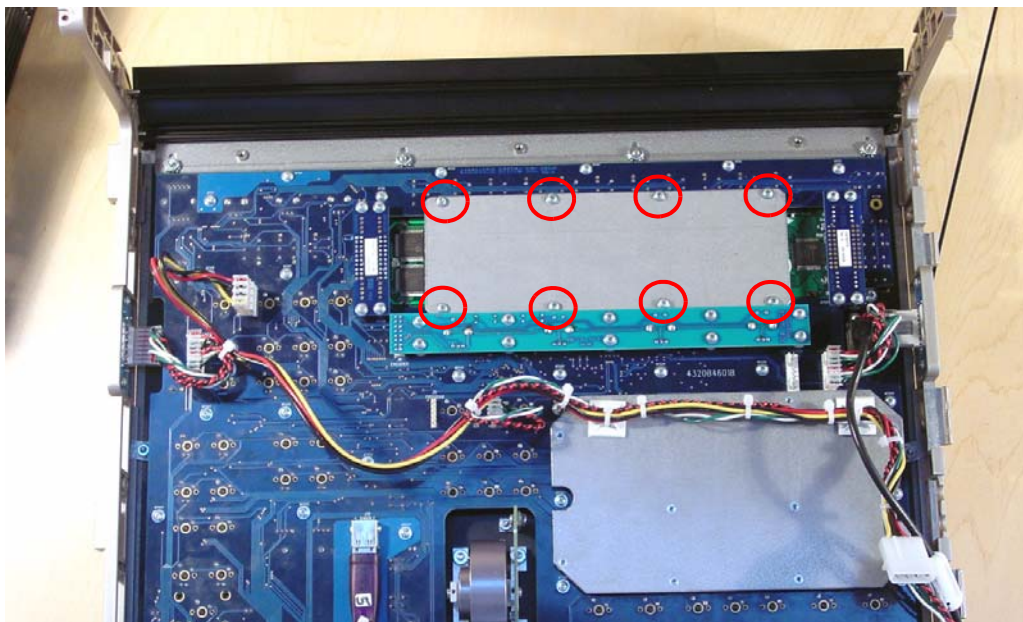
ETC Service Note

Congo™ jr LCD Replacement

- Step 8: Disconnect the J1 USB Uplink from the I/O card.
Step 9: Disconnect the face panel USB 1&2 connectors from the Congo jr motherboard.
Step 10: Clip the zip ties holding the face panel cables to the base of the unit.



- Step 11: Carefully set the Congo jr face panel face down exposing the back side of the face panel PCB.

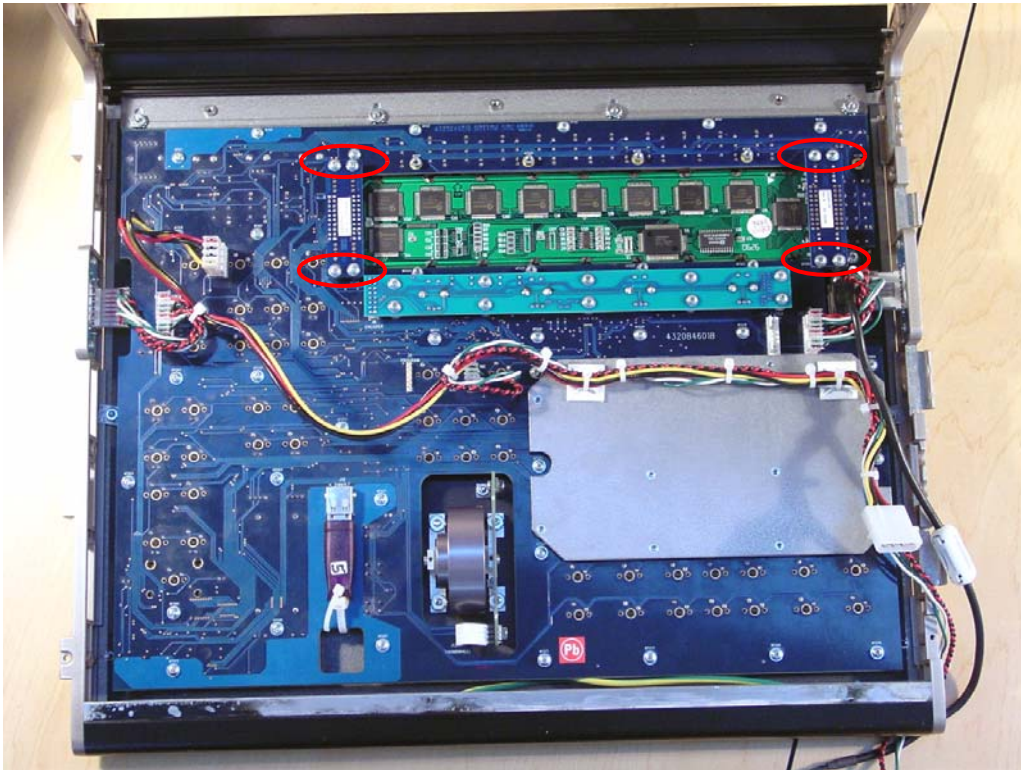


- Step 12: Remove the 8 short screws from the LCD pressure plate.
NOTE: Be sure that you keep these 8 screws separated from the other FP screws as these are shorter than the others.

ETC Service Note

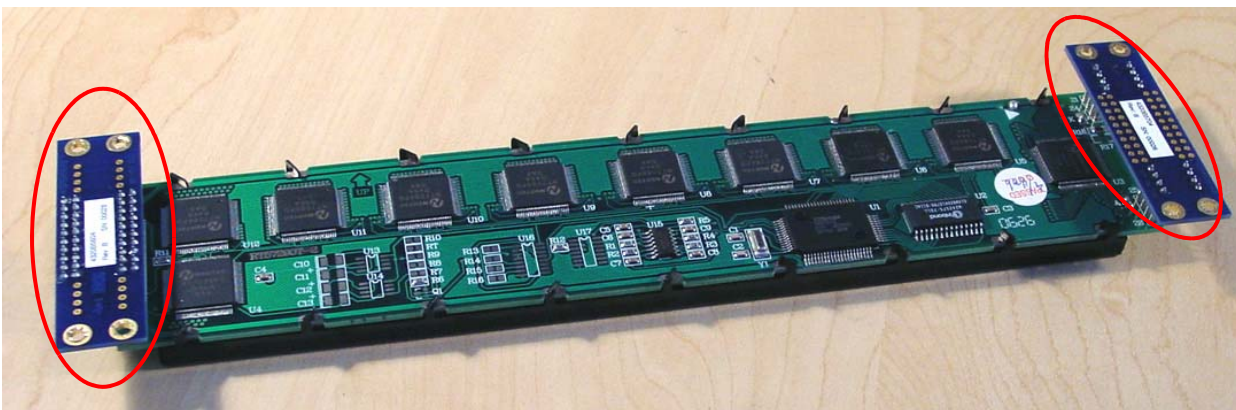
Congo™ jr LCD Replacement

Step 13: Remove the 8 face panel LCD Jumper screws



Step 14: Lightly lift each side of the LCD Screen socket circuit board to remove the LCD screen from the Congo jr face panel.

Step 15: Replace the LCD screen by removing each of the 2 face panel LCD Jumper circuit boards. Re-attach the LCD jumper circuit boards to the new LCD screen.



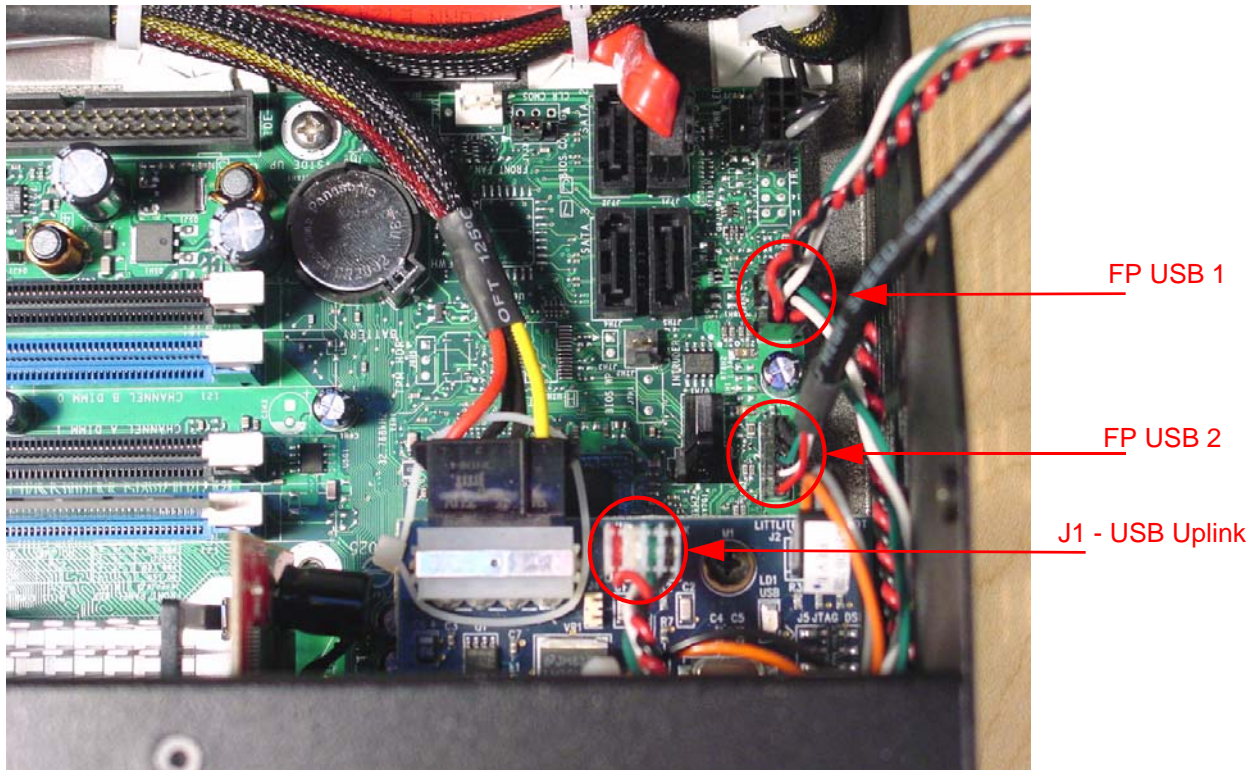
Step 16: Place the LCD screen back into the face panel and screw the circuit board into the standoffs.

Step 17: Place the LCD pressure plate back over the LCD screen and screw the 8 short screws back into the standoffs.

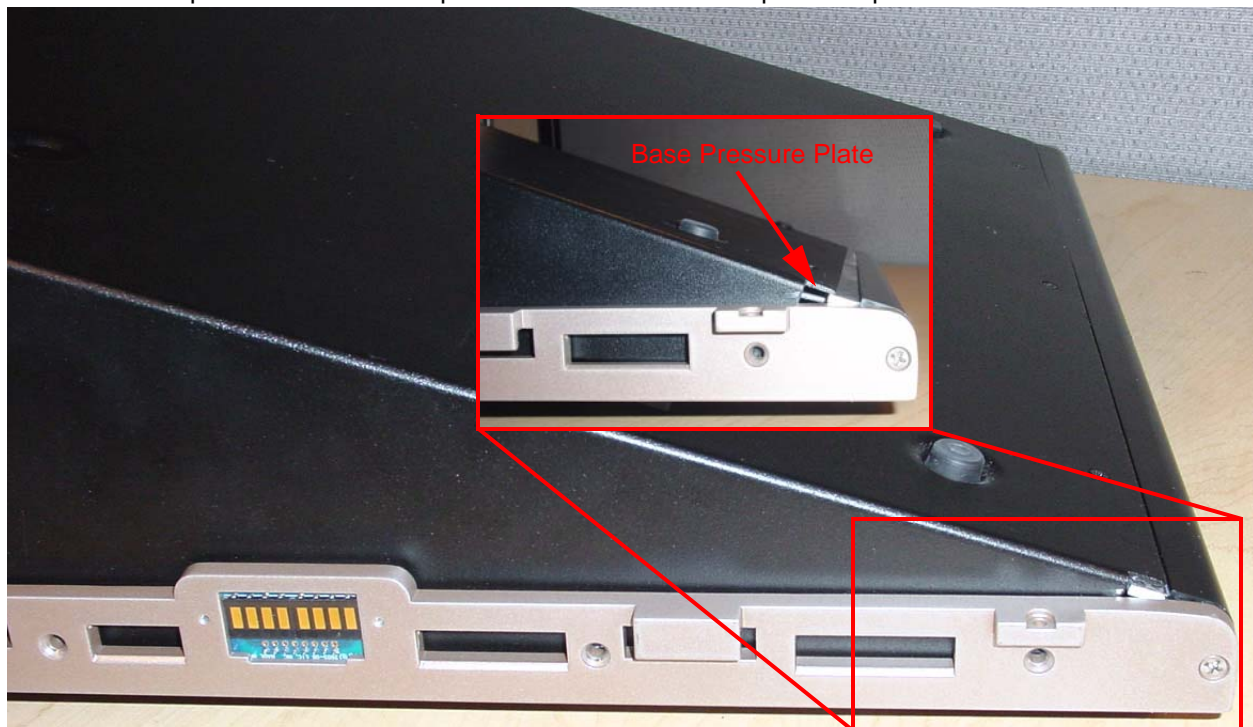
ETC Service Note

Congo™ jr LCD Replacement

Step 18: Re-attach the USB Connectors to the motherboard.



Step 19: Slide the face panel back under the base pressure plate.



Step 20: Re-attach all 7 screws from each side of the console face panel.

Step 21: Flip the face panel over and tighten the 3 screws on the base of the console.

Step 22: Power the console up and verify correct face panel operation and LCD screen operation.

ETC Service Note

Congo™ jr LCD Replacement
